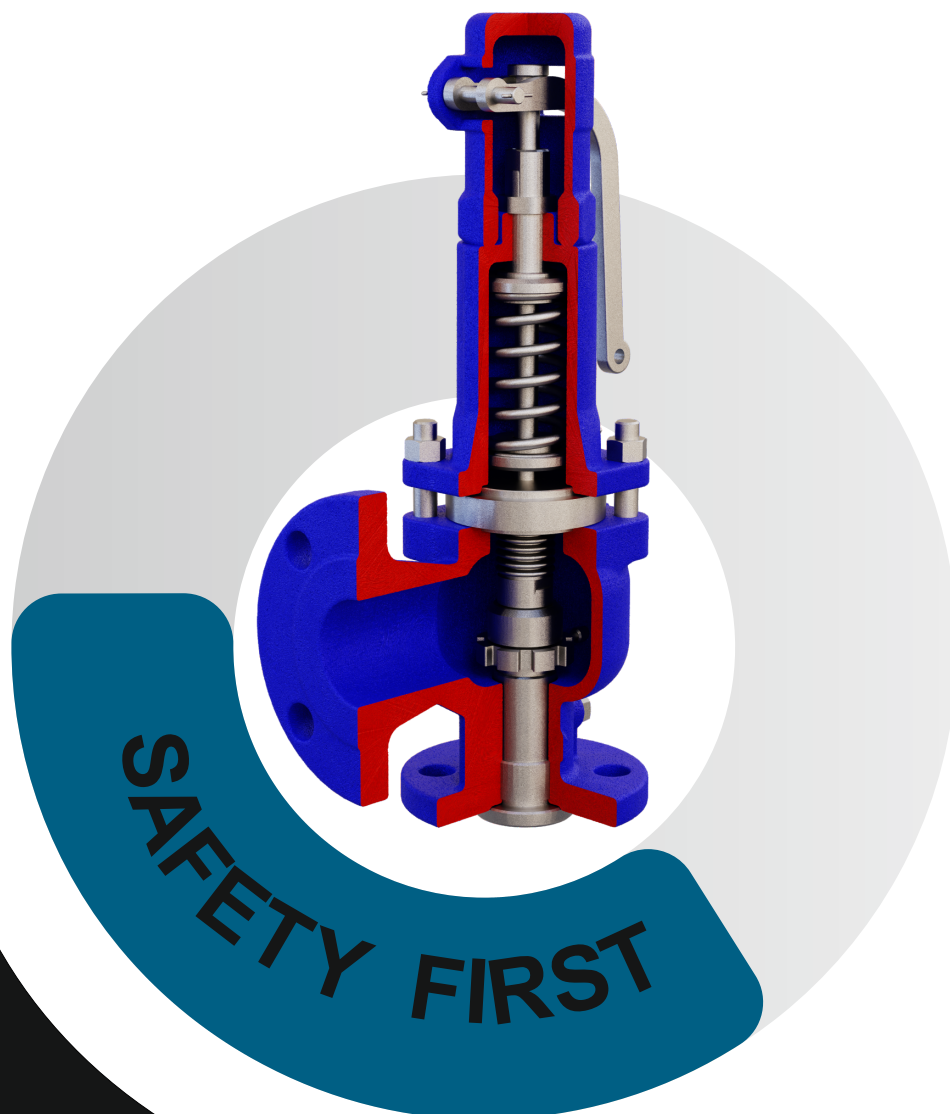


KINTORK



SAFETY VALVES
ABBREVIATED CATALOGUE
All Products



KINTORIK[®]

Content	1
Spring Loaded Safety Relief Valve	2
Pilot Operated Safety Relief Valve	4
Pilot Operated / Pop-Aciton	4
Pilot Operated / Modulate-Aciton	6
Pilot Operated / Fire Fighting	8
Compact Series Safety Relief Valve	10
Compact / NC-230	10
Compact / NC-930	12
Compact / HP-4090	14
Compact / LP-100	16
Pressure Vacuum Relief(Safety) Valve	18
Circulation Relief Valve	20
Automatic Recirculation Control Valve	22
Clean Service Safety Relief Valve	24
Notes	26

Description

Spring loaded safety relief valve or direct-acting spring valves is a self-actuated spring-loaded pressure relief valve which is designed to open at a predetermined pressure and protect a vessel or system from excess pressure by removing or relieving fluid from that vessel or system.

This type of safety valve meet all the requirement of API 520, API 521, API 526 ,PED/EN ISO 4126 , GOST 31294, GOST 12.2.085 such as orifice area, sizing procedure, dimension, pressure rate, flange connection size.



Valve Types

Conventional Safety Relief Valve:

A conventional pressure relief valve is a spring loaded pressure relief valve whose operational characteristics are directly affected by changes in the back pressure.

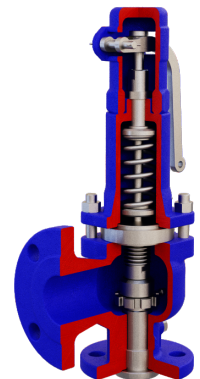
Balanced Safety Relief Valve:

A bellows safety relief valve is a spring loaded pressure relief valve that incorporates a bellows or other means for minimizing the effect of back pressure on the operational characteristics of the valve.



Advantages

- 100% Compatibility to API 526
- ·Adjustable blow down
- ·Most reliable type if properly sized and operated
- ·Versatile, can be used in many services



Applications



Offer ultimate protection against overpressures in all applications for steam, gases, and liquids.

- Refineries
- Chemical industry
- Petrochemical industry
- Oil and gas – Onshore and Offshore
- Vessels and piping systems
- Blow-down systems
- Storage tank farms

Article	CE (Metric)		ASME (SI)	
Inlet Size Range	DN 25-DN 200		1"-8"	
Outlet Size Range	DN 50-DN 250		2"-10"	
Connection Std	EN 1092-1		ASME B16.5	
Inlet Flange Rating	PN 16-PN 400		CL 150-CL 2500	
Orifice Letter	10 mm-160mm		D through T 0.39 through 6.3 inch	
Pressure Range	0.12 up to 400 Bar		2 up to 6,000 psig	
Temperature Range	-270 to 550 °C		-450 to 1,000 °F	
Body Material	Carbon Steel	1.0460, 1.0619	Carbon Steel	SA 105, SA 216(WCB), SA 352(LCB)
	Heat Resistant Carbon Steel	1.7357	Heat Resistant Carbon Steel	SA 217(WC6)
	Stainless Steel	1.4408, 1.4409	Stainless Steel	SA 351(CF8M, CF3M)
Spring Material	1.4310, 1.4401, 1.4404, 14571, 1.7102 1.8159, EN 10270, 2.4669		302, 316, 316L, 316Ti, Inconel X-750	
Seat Types	Soft Seat, Hard Seat(Metal to Metal)			
Seat Materials	Metal Sealing		Stellite 6	
	Soft Sealing		NBR, HNBR, Viton, Kalrez	
Balanced Types	Balanced Bellows Balanced Piston Balanced Bellows and Piston			
Bellows Material	1.4307, 1.4404, 2.4856		304L, 316L, Inconel 625	
Cap Types	Screwed, Bolted			
Lever Types	Plain, Packed			
Bonnet Types	Open, Close			
Test Gag	Applicable			
Heating Jacket	Applicable			

Code and Standards :



Pop-Action

A pop-action pilot operated safety valve is a critical component used to protect pressurized systems from overpressure conditions. This type of safety valve utilizes a pilot mechanism to provide more precise control over pressure settings. The pilot valve opens when the system pressure exceeds a predetermined level, allowing the main valve to open quickly and relieve the pressure.

This type of safety valve meet all the requirement of API 520, API 521, API 526 ,ISO 4126 , GOST 31294 such as orifice area, sizing procedure, dimension, pressure rate, flange connection size.

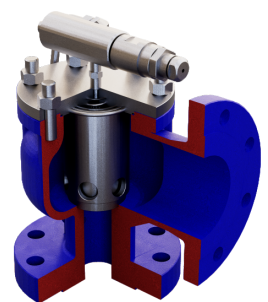


Features

- Robust and insensitive to vibrations.
- The spring is easily accessible by removing the top section of the bonnet only.
- Blowdown "failsafe".
- The blowdown range of 2 – 7%, which conforms to codes and standards, can easily be adjusted with the help of an optical marking feature on the pilot.
- A large pressure range of 1.4 to 414 bar (20 - 6000 psig) ensures that the Pilot operated safety valve can be used for a multitude of applications.
- Easy material replacement.
- The piping of the pilot is integrated into the cover, which minimizes the danger of leakage points, pipe damage, and leads to fewer faults in the system.
- The self-draining angle type body prevents residue and reduces corrosion.

Advantages

- 100% Compatibility to API 526
- Full lift at set pressure
- Adjustable blow down
- Control pilot can be mounted remotely
- Seals more tightly
- No affected by back pressure



Applications

- Gas Compressor Stations
- Refineries
- Petrochemical Industry
- Oil / Gas - Onshore and Offshore
- Tank Farms / Tanker Ships
- Pulp and Paper Industry
- Pumps

Article	Metric		SI	
Inlet Size Range	DN 25-DN 200		1"-8"	
Outlet Size Range	DN 50-DN 250		2"-10"	
Connection Std	EN 1092-1		ASME B16.5	
Inlet Flange Rating	PN 20-PN 420		CL 150-CL 2500	
Orifice Letter	10 mm-160mm		D through T 0.39 through 6.3 inch	
Pressure Range	0.3 up to 350 Bar		5 up to 5,110 psig	
Temperature Range	-100 to 250 °C		-148 to 482 °F	
Body Material	Carbon Steel	1.0460, 1.0619	Carbon Steel	SA 105, SA 216(WCB), SA 352(LCB)
	Heat Resistant Carbon Steel	1.7357	Heat Resistant Carbon Steel	SA 217(WC6)
	Stainless Steel	1.4408, 1.4409	Stainless Steel	SA 351(CF8M, CF3M)
Spring Material	1.4310, 1.4401, 1.4404, 14571, 1.7102 1.8159, EN 10270, 2.4669		302, 316, 316L, 316Ti, Inconel X-750	
Seat Types	Soft Seat, Hard Seat(Metal to Metal)			
Seat Materials	Metal Sealing	Stellite 6		
	Soft Sealing	NBR, HNBR, Viton, Kalrez		
Test Gag	Applicable			
Back Flow	Applicable			
Manual Override	Applicable			

Code and Standards :

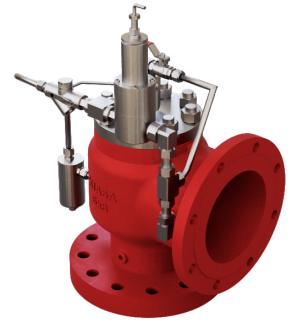


Modulate-Action

A modulate-action pilot-operated safety relief valve (PRV) is a specialized device designed to protect pressure vessels and piping systems from overpressure conditions.

This valve uses a pilot mechanism to control its opening and closing. Unlike pilot-operated safety relief valves that fully open or close at set pressure points, modulate-action PRVs gradually adjust the flow to maintain a set pressure, allowing them to manage fluctuations effectively. According to API-520 for liquid fluid shall be used Modulate-Action Pilot valve.

This type of safety valve meet all the requirement of API 520, API 521, API 526 ,ISO 4126 , GOST 31294 such as orifice area, sizing procedure, dimension, pressure rate, flange connection size.

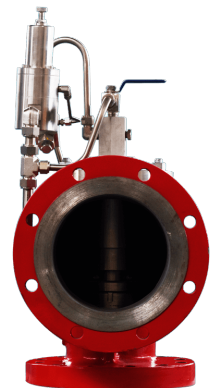


Features

- Robust and insensitive to vibrations.
- The spring is easily accessible by removing the top section of the bonnet only.
- Blowdown "failsafe".
- The blowdown range of 2 – 7%, which conforms to codes and standards, can easily be adjusted with the help of an optical marking feature on the pilot.
- A large pressure range of 1.4 to 414 bar (20 - 6000 psig) ensures that the Pilot operated safety valve can be used for a multitude of applications.
- Easy material replacement.
- The piping of the pilot is integrated into the cover, which minimizes the danger of leakage points, pipe damage, and leads to fewer faults in the system.
- The self-draining angle type body prevents residue and reduces corrosion.

Advantages

- 100% Compatibility to API 526
- Full lift at set pressure
- Adjustable blow down
- Control pilot can be mounted remotely
- Seals more tightly
- No affected by back pressure



Applications

- Gas Compressor Stations
- Refineries
- Petrochemical Industry
- Oil / Gas - Onshore and Offshore
- Tank Farms / Tanker Ships
- Pulp and Paper Industry
- Pumps

Article	Metric		SI	
Inlet Size Range	DN 25-DN 200		1"-8"	
Outlet Size Range	DN 50-DN 250		2"-10"	
Connection Std	EN 1092-1		ASME B16.5	
Inlet Flange Rating	PN 20-PN 420		CL 150-CL 2500	
Orifice Letter	10 mm-160mm		D through T 0.39 through 6.3 inch	
Pressure Range	0.3 up to 350 Bar		5 up to 5,110 psig	
Temperature Range	-100 to 250 °C		-148 to 482 °F	
Body Material	Carbon Steel	1.0460, 1.0619	Carbon Steel	SA 105, SA 216(WCB), SA 352(LCB)
	Heat Resistant Carbon Steel	1.7357	Heat Resistant Carbon Steel	SA 217(WC6)
	Stainless Steel	1.4408, 1.4409	Stainless Steel	SA 351(CF8M, CF3M)
Spring Material	1.4310, 1.4401, 1.4404, 14571, 1.7102 1.8159, EN 10270, 2.4669		302, 316, 316L, 316Ti, Inconel X-750	
Seat Types	Soft Seat, Hard Seat(Metal to Metal)			
Seat Materials	Metal Sealing	Stellite 6		
	Soft Sealing	NBR, HNBR, Viton, Kalrez		
Test Gag	Applicable			
Back Flow	Applicable			
Manual Override	Applicable			

Code and Standards :



Fire Fighting

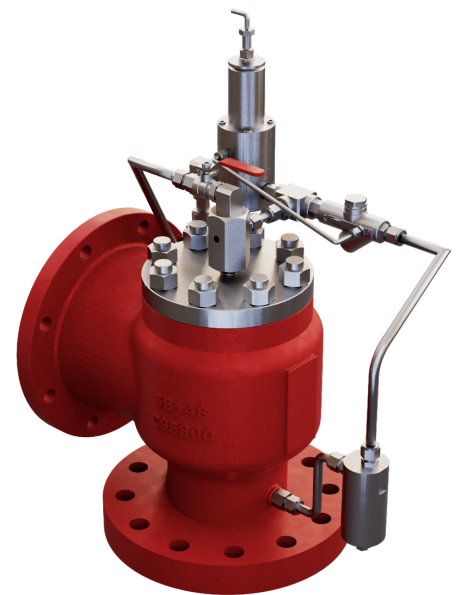
FF-50 Pressure Relief Valve is designed to maintain constant upstream pressure within close limits. In operation, the valve is actuated by line pressure through a pilot control system, opening fast to maintain steady line pressure but closing gradually to prevent surges. In addition to surge relief, this valve can be used for pressure relief, pressure sustaining, back pressure or unloading functions in a by-pass system.

Advantages

- 100% Compatibility to NFPA 20 Standard
- Low Loss of Medium When Opening
- Control Pilot Can Be Mounted Remotely
- Seals More Tightly
- No Affected by Back Pressure

Applications

- Fire Fighting System
- Oil and Gas Industry
- Chemical Industry
- Petrochemical Industry
- Power
- Technical Gases



Article	Metric		SI	
Inlet Size Range	DN 25-DN 200		1"-8"	
Outlet Size Range	DN 50-DN 250		2"-10"	
Connection Std	EN 1092-1		ASME B16.5	
Inlet Flange Rating	PN 20-PN 420		CL 150-CL 2500	
Orifice Letter	10 mm-160mm		D through T 0.39 through 6.3 inch	
Pressure Range	0.3 up to 350 Bar		5 up to 5,110 psig	
Temperature Range	-100 to 250 °C		-148 to 482 °F	
Body Material	Carbon Steel	1.0460, 1.0619	Carbon Steel	SA 105, SA 216(WCB), SA 352(LCB)
	Heat Resistant Carbon Steel	1.7357	Heat Resistant Carbon Steel	SA 217(WC6)
	Stainless Steel	1.4408, 1.4409	Stainless Steel	SA 351(CF8M, CF3M)
Spring Material	1.4310, 1.4401, 1.4404, 14571, 1.7102 1.8159, EN 10270, 2.4669		302, 316, 316L, 316Ti, Inconel X-750	
Seat Types	Soft Seat, Hard Seat(Metal to Metal)			
Seat Materials	Metal Sealing	Stellite 6		
	Soft Sealing	NBR, HNBR, Viton, Kalrez		
Test Gag	Applicable			
Back Flow	Applicable			
Manual Override	Applicable			

Code and Standards :



NC-230

Compact series are a small size of spring loaded safety relief valve and sized according to API 520 but don't selected accordance to API 526.

Compact series is a self-actuated spring-loaded pressure relief valve which is designed to open at a predetermined pressure and protect a vessel or system from excess pressure by removing or relieving fluid from that vessel or system.

This type of safety valve meet all the requirement of API 520, API 521, ISO 4126, GOST 31294 such as general requirement and sizing procedure.

Features

- Versatile and multi-service.
- A single design handles air, steam and liquid services.
- Maximum interchangeability of parts allows for easy maintenance and lower costs.
- Fixed blowdown design simplifies testing and repair.



Advantages

- Most reliable type if properly sized and operated
- Versatile, can be used in many services
- Compact design
- Large selection of possible connections and seals for different operating condition



Applications

- Chemical Industry
- Petrochemical Industry
- Technical Gases
- Oil and Gas Industry
- Power
- Food and Beverage Industry
- Pharmaceutical Industry

Article	CE (Metric)		ASME (SI)	
Inlet Size Range	DN 8-DN 25		1/4"-1"	
Outlet Size Range	DN 8-DN 25		1/4"-1"	
Flanged Connection Std	EN 1092-1		ASME B16.5	
Threaded Connection Std	EN 10226-1		ASME B1.20.1	
Inlet Flange Rating	PN 20-PN 50		CL 150-CL 300	
Orifice Letter	10 mm, 14mm		D through E 0.39 inch, 0.55 inch	
Pressure Range	0.5 up to 45 Bar		7 up to 652.5 psig	
Temperature Range	-270 to 550 °C		-450 to 1,000 °F	
Body Material	Carbon Steel	1.0460	Carbon Steel	SA 105
	Heat Resistant Carbon Steel	1.7335	Heat Resistant Carbon Steel	SA 739 B11
	Stainless Steel	1.4301, 1.4401, 1.4404, 1.4462	Stainless Steel	SA 479 304/316/316L/ S31803(Duplex)
Spring Material	1.4310, 1.4401, 1.4404, 1.4571, 1.7102 1.8159, EN 10270, 2.4669		302, 316, 316L, 316Ti, Inconel X-750	
Seat Types	Soft Seat, Hard Seat(Metal to Metal)			
Seat Materials	Metal Sealing	Stellite 6		
	Soft Sealing	NBR, HNBR, Viton, Kalrez		
Balanced Types	Balanced Piston			
Bellows Material	1.4307, 1.4404, 2.4856		SA 479 304L/316, Inconel 625	
Cap Types	Screwed			
Lever Types	Plain, Packed			
Bonnet Types	Open, Close			
Test Gag	Applicable			
Heating Jacket	Applicable			

Code and Standards :



NC-930

Compact series are a small size of spring loaded safety relief valve and sized according to API 520 but don't selected accordance to API 526.

Compact series is a self-actuated spring-loaded pressure relief valve which is designed to open at a predetermined pressure and protect a vessel or system from excess pressure by removing or relieving fluid from that vessel or system.

This type of safety valve meet all the requirement of API 520, API 521, ISO 4126, GOST 31294 such as general requirement and sizing procedure.

Features

- Versatile and multi-service.
- A single design handles air, steam and liquid services.
- Maximum interchangeability of parts allows for easy maintenance and lower costs.
- Fixed blowdown design simplifies testing and repair.



Advantages

- Most reliable type if properly sized and operated
- Versatile, can be used in many services
- Compact design
- Large selection of possible connections and seals for different operating condition



Applications

- Chemical Industry
- Petrochemical Industry
- Technical Gases
- Oil and Gas Industry
- Power
- Food and Beverage Industry
- Pharmaceutical Industry

Article	CE (Metric)		ASME (SI)	
Inlet Size Range	DN 8-DN 40		1/4"-1.1/2"	
Outlet Size Range	DN 8-DN 40		1/4"-1.1/2"	
Flanged Connection Std	EN 1092-1		ASME B16.5	
Threaded Connection Std	EN 10226-1		ASME B1.20.1	
Inlet Flange Rating	PN 20-PN 100		CL 150-CL 600	
Orifice Letter	10 mm, 14mm		D through E 0.39 inch, 0.55 inch	
Pressure Range	0.5 up to 120 Bar		7 up to 1740.5 psig	
Temperature Range	-270 to 550 °C		-450 to 1,000 °F	
Body Material	Carbon Steel	1.0460	Carbon Steel	SA 105
	Heat Resistant Carbon Steel	1.7335	Heat Resistant Carbon Steel	SA 739 B11
	Stainless Steel	1.4301, 1.4401, 1.4404, 1.4462	Stainless Steel	SA 479 304/316/316L/ S31803(Duplex)
Spring Material	1.4310, 1.4401, 1.4404, 1.4571, 1.7102 1.8159, EN 10270, 2.4669		302, 316, 316L, 316Ti, Inconel X-750	
Seat Types	Soft Seat, Hard Seat(Metal to Metal)			
Seat Materials	Metal Sealing	Stellite 6		
	Soft Sealing	NBR, HNBR, Viton, Kalrez		
Balanced Types	Balanced Piston Balanced Bellows			
Bellows Material	1.4307, 1.4404, 2.4856		SA 479 304L/316, Inconel 625	
Cap Types	Screwed			
Lever Types	Plain, Packed			
Bonnet Types	Open, Close			
Test Gag	Applicable			
Heating Jacket	Applicable			

Code and Standards :



HP-4090

Compact series are a small size of spring loaded safety relief valve and sized according to API 520 but don't selected accordance to API 526.

Compact series is a self-actuated spring-loaded pressure relief valve which is designed to open at a predetermined pressure and protect a vessel or system from excess pressure by removing or relieving fluid from that vessel or system.

This type of safety valve meet all the requirement of API 520, API 521, ISO 4126, GOST 31294 such as general requirement and sizing procedure.

Features

- Versatile and multi-service.
- A single design handles air, steam and liquid services.
- Maximum interchangeability of parts allows for easy maintenance and lower costs.
- Fixed blowdown design simplifies testing and repair.



Advantages

- Most reliable type if properly sized and operated
- Versatile, can be used in many services
- Compact high pressure design
- Large selection of possible connections and seals for different operating condition

Applications

- Chemical Industry
- Petrochemical Industry
- Technical Gases
- Oil and Gas Industry
- Power
- Food and Beverage Industry
- Pharmaceutical Industry

Article	CE (Metric)		ASME (SI)	
Inlet Size Range	DN 8-DN 50		1/4"-2"	
Outlet Size Range	DN 8-DN 50		1/4"-2"	
Flanged Connection Std	EN 1092-1		ASME B16.5	
Threaded Connection Std	EN 10226-1		ASME B1.20.1	
Inlet Flange Rating	PN 20-PN 420		CL 150-CL 2500	
Orifice Letter	10 mm, 14 mm, 18 mm, 20.35 mm		D through G 0.39, inch, 0.55 inch, 0.40 inch, 0.80 inch	
Pressure Range	0.5 up to 350 Bar		7 up to 5076.3 psig	
Temperature Range	-270 to 550 °C		-450 to 1,000 °F	
Body Material	Carbon Steel	1.0460	Carbon Steel	SA 105
	Heat Resistant Carbon Steel	1.7335	Heat Resistant Carbon Steel	SA 739 B11
	Stainless Steel	1.4301, 1.4401, 1.4404, 1.4462	Stainless Steel	SA 479 304/316/316L/ S31803(Duplex)
Spring Material	1.4310, 1.4401, 1.4404, 1.4571, 1.7102 1.8159, EN 10270, 2.4669		302, 316, 316L, 316Ti, Inconel X-750	
Seat Types	Soft Seat, Hard Seat(Metal to Metal)			
Seat Materials	Metal Sealing	Stellite 6		
	Soft Sealing	NBR, HNBR, Viton, Kalrez		
Balanced Types	Balanced Piston Balanced Bellows			
Bellows Material	1.4307, 1.4404, 2.4856		SA 479 304L/316, Inconel 625	
Cap Types	Screwed			
Lever Types	Plain, Packed			
Bonnet Types	Open, Close			
Test Gag	Applicable			
Heating Jacket	Applicable			

Code and Standards :



LP-100

The LP-100 low-pressure relief valve is a specialized valve designed to manage and control pressure in gas systems, particularly in natural gas applications.

This type of safety valve meet all the requirement of API 520, API 521 ,ISO 4126 , GOST 31294 such as orifice area, sizing procedure, dimension, pressure rate, flange and Thread connection size.

Features

- Versatile and multi-service.
- A single design handles air, steam and liquid services.
- Maximum interchangeability of parts allows for easy maintenance and lower costs.
- Fixed blowdown design simplifies testing and repair.



Advantages

- Flange and Thread Connection
- Low loss of medium when opening
- Steel Diaphragm
- Soft and Hard Seat

Applications

- Chemical Industry
- Petrochemical Industry
- Technical Gases
- Oil and Gas Industry
- Power

Article	Metric	SI		
Inlet Size Range	DN 8-DN 50	1/4"-2"		
Outlet Size Range	DN 8-DN 50	1/4"-2"		
Flanged Connection Std	EN 1092-1	ASME B16.5		
Threaded Connection Std	EN 10226-1	ASME B1.20.1		
Inlet Flange Rating	PN 20	CL 150		
Orifice Letter	10 mm, 14 mm, 18 mm, 20.35 mm	D through G 0.39, inch, 0.55 inch, 0.40 inch, 0.80 inch		
Pressure Range	50 up to 1000 mbar	0.7 up to 14.5 psig		
Temperature Range	-100 to 250 °C	-148 to 482 °F		
Body Material	Carbon Steel	1.0460	Carbon Steel	SA 105
	Heat Resistant Carbon Steel	1.7335	Heat Resistant Carbon Steel	SA 739 B11
	Stainless Steel	1.4301, 1.4401, 1.4404, 1.4462	Stainless Steel	SA 479 304/316/316L/ S31803(Duplex)
Spring Material	1.4310, 1.4401, 1.4404, 1.4571, 1.7102 1.8159, EN 10270, 2.4669	302, 316, 316L, 316Ti, Inconel X-750		
Seat Types	Soft Seat, Hard Seat(Metal to Metal)			
Seat Materials	Metal Sealing	Stellite 6		
	Soft Sealing	NBR, HNBR, Viton, Kalrez		
Balanced Types	N/A			
Cap Types	Screwed			
Test Gag	Applicable			

Code and Standards :



Description

Pressure vacuum relief systems are used to protect pressure and vacuum in the storage tank against situations of excess pressure.

Kiatork produces different types of pressure and vacuum valves depending on the customer's needs and with different combinations and has different options for choosing the type of valve.

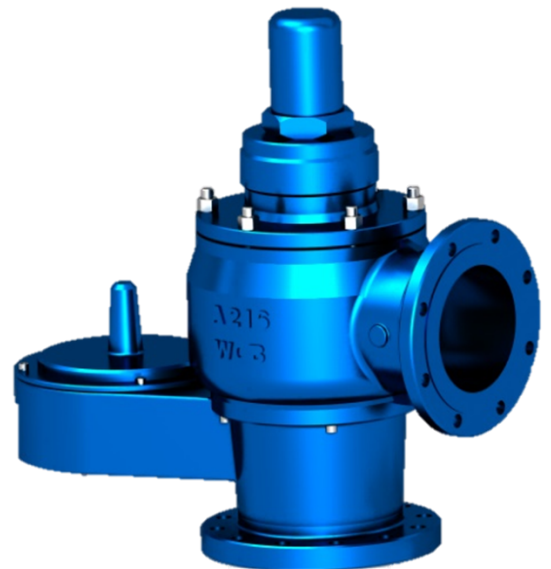
This type of safety valve meet all the requirement of API 2000 such as orifice area, sizing procedure, pressure rate, flange connection.

Advantages

- 100% Compatibility to API 2000
- Prevention of Tank Collapse
- Operational Efficiency
- Pilot Operated / Spring Loaded And Weight Loaded Type
- Ease of Maintenance

Applications

- Oil and Gas Industry
- Chemical Industry
- Petrochemical Industry
- Water Treatment



Article	Metric		SI	
Inlet Size Range	DN 50-DN 300		2"-12"	
Outlet Size Range	DN 50-DN 300		2"-12"	
Flanged Connection Std	EN 1092-1		ASME B16.5	
Inlet Flange Rating	PN 20-PN 100		CL 150-CL 600	
Orifice Letter	Full Bore		Full Bore	
Pressure Range	1 up to 1000 mbarg		0.01 up to 14.5 psig	
Temperature Range	-100 to 250 °C		-148 to 482 °F	
Body Material	Carbon Steel	1.0460, 1.0619	Carbon Steel	SA 105, SA 216(WCB), SA 352(LCB)
	Heat Resistant Carbon Steel	1.7357	Heat Resistant Carbon Steel	SA 217(WC6)
	Stainless Steel	1.4408, 1.4409	Stainless Steel	SA 351(CF8M, CF3M)
Spring Material	1.4016, 1.4310, 1.4401, 1.4404, 1.4571, 1.7102, 1.8159, EN 10270, 2.4669		302, 316, 316L, 316Ti, Inconel X-750	
Seat Types	Soft Seat, Hard Seat(Metal to Metal)			
Seat Materials	Metal Sealing	Stellite 6		
	Soft Sealing	NBR, HNBR, Viton, Kalrez		

Code and Standards :



Description

The Circulation Relief Valve(CRV) is discharge to open gradually. This valve used to cool a pump by discharging a small quantity of water. This valve is seprate from and independent of the main relief valve.

When inlet pressure increased, so diaphragm of CRV sense the pressure and if pressure reach the adjustment pressure, CRV will be open and discharge the water. As the flow gradually increases, the velocity head of the liquid moving through the nozzle also increases. When the pressure Decrease, so diaphragm of CRV sense the pressure and close the valve.

Advantages

- 100% Compatibility to NFPA 20 Standard
- Most Reliable Type if Properly Sized and Operated
- Versatile, Can be Used in Many Services
- Compact and High Pressure Design
- Seals More Tightly
- No Affected by Back Pressure

Applications

- Fire Fighting System
- Oil and Gas Industry
- Chemical Industry
- Petrochemical Industry
- Power
- Technical Gases



Article	Metric		SI	
Inlet Size Range	DN 8-DN 50		1/4"-2"	
Outlet Size Range	DN 8-DN 50		1/4"-2"	
Flanged Connection Std	EN 1092-1		ASME B16.5	
Threaded Connection Std	EN 10226-1		ASME B1.20.1	
Inlet Flange Rating	PN 20-PN 420		CL 150-CL 2500	
Orifice Letter	10 mm, 14 mm, 18 mm		D through F 0.39, inch, 0.55 inch, 0.40 inch	
Pressure Range	0.3 up to 350 Bar		5 up to 5076.3 psig	
Temperature Range	-270 to 550 °C		-450 to 1,000 °F	
Body Material	Carbon Steel	1.0460	Carbon Steel	SA 105
	Heat Resistant Carbon Steel	1.7335	Heat Resistant Carbon Steel	SA 739 B11
	Stainless Steel	1.4301, 1.4401, 1.4404, 1.4462	Stainless Steel	SA 479 304/316/316L/430/S31803(Duplex)
Spring Material	1.4016, 1.4310, 1.4401, 1.4404, 1.4571, 1.7102, 1.8159, EN 10270, 2.4669		302, 316, 316L, 316Ti, Inconel X-750	
Seat Types	Soft Seat, Hard Seat(Metal to Metal)			
Seat Materials	Metal Sealing	Stellite 6		
	Soft Sealing	NBR, HNBR, Viton, Kalrez		
Cap Types	Screwed			
Bonnet Types	Open, Close			
Test Gag	Applicable			
Heating Jacket	Applicable			

Code and Standards :



Description

In any process where pumps are used to transfer liquids, such as liquid boiler feed water, condensate or process fluids, especially in centrifugal pumps, it is necessary to protect the flow at least during pump start-up and low demand conditions in order to prevent cavitation in the centrifugal pump and its failure.

If there is no reliable protection, the following adverse effects can interfere with the reliable operation and performance of the pump.

Advantages

- Enhanced Process Control
- Protection Against Low Flow
- Improved System Reliability
- Compact Design

Applications

- Oil and Gas Industry
- Chemical Industry
- Petrochemical Industry
- Power
- Technical Gases



Article	Metric		SI	
Inlet Size Range	DN 50-DN 300		2"-12"	
Outlet Size Range	DN 50-DN 300		2"-12"	
Connection Std	EN 1092-1		ASME B16.5	
Inlet Flange Rating	PN 20-PN 420		CL 150-CL 600	
Pressure Range	0.3 up to 350 Bar		5 up to 5076.3 psig	
Temperature Range	-100 to 550 °C		-148 to 1,000 °F	
Body Material	Carbon Steel	1.0460, 1.0619	Carbon Steel	SA 105, SA 216(WCB), SA 352(LCB)
	Heat Resistant Carbon Steel	1.7357	Heat Resistant Carbon Steel	SA 217(WC6)
	Stainless Steel	1.4408, 1.4409	Stainless Steel	SA 351(CF8M, CF3M)
Spring Material	1.4310, 1.4401, 1.4404, 1.4571, 1.7102 1.8159, EN 10270, 2.4669		302, 316, 316L, 316Ti, Inconel X-750	
Seat Types	Soft Seat, Hard Seat(Metal to Metal)			
Seat Materials	Metal Sealing	Stellite 6		
	Soft Sealing	NBR, HNBR, Viton, Kalrez		

Code and Standards :



Description

Safety Relief Valve for Food and Pharmaceutical Industries

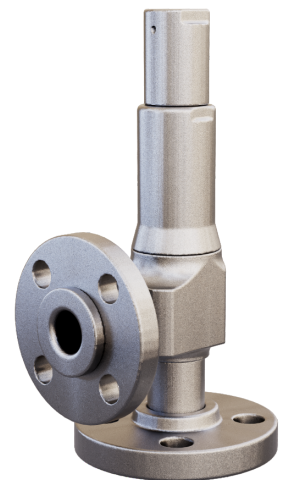
Clean service valve is similar to spring-loaded/compact valve. It is a self-actuated safety relief device which acts with the aid of a spring assembly that is designed to open at a predetermined pressure. The spring-loaded valve includes conventional, balanced-bellows, and balanced-piston types.

Advantages

- 100% Compatibility with ASME BPE Bioprocessing Equipment
- Tri-Clamp / Flange / Thread Connection
- Hygienic Design
- Most Reliable Type If Properly Sized and Operated
- Versatile, Can Be Used in Many Services
- Compact and High Pressure Design
- Large Selection of Possible Connections and Seals for Different Operating Condition

Applications

- Food Industry
- Pharmaceutical Industry



Article	CE (Metric)		ASME (SI)	
Inlet Size Range	DN 8-DN 50		1/4"-2"	
Outlet Size Range	DN 8-DN 50		1/4"-2"	
Flanged Connection Std	EN 1092-1		ASME B16.5	
Threaded Connection Std	EN 10226-1		ASME B1.20.1	
Inlet Flange Rating	PN 20-PN 420		CL 150-CL 2500	
Orifice Letter	10 mm, 14 mm, 18 mm, 20.35 mm		D through G 0.39, inch, 0.55 inch, 0.40 inch, 0.80 inch	
Pressure Range	0.5 up to 350 Bar		7 up to 5076.3 psig	
Temperature Range	-270 to 550 °C		-450 to 1,000 °F	
Body Material	Carbon Steel	1.0460	Carbon Steel	SA 105
	Heat Resistant Carbon Steel	1.7335	Heat Resistant Carbon Steel	SA 739 B11
	Stainless Steel	1.4301, 1.4401, 1.4404, 1.4462	Stainless Steel	SA 479 304/316/316L/ S31803(Duplex)
Spring Material	1.4310, 1.4401, 1.4404, 1.4571, 1.7102 1.8159, EN 10270, 2.4669		302, 316, 316L, 316Ti, Inconel X-750	
Seat Types	Soft Seat, Hard Seat(Metal to Metal)			
Seat Materials	Metal Sealing	Stellite 6		
	Soft Sealing	NBR, HNBR, Viton, Kalrez		
Balanced Types	Balanced Piston Balanced Bellows			
Bellows Material	1.4307, 1.4404, 2.4856		SA 479 304L/316, Inconel 625	
Cap Types	Screwed			
Lever Types	Plain, Packed			
Bonnet Types	Open, Close			
Test Gag	Applicable			
Heating Jacket	Applicable			

Code and Standards :



KIATORK



CONTACT



90 533 014 20 71



info@kiatork.com



www.kiatork.com



4/50, 5007th Street, Coraklar Neighborhood
Aliaga City, Izmir, 35800, Türkiye